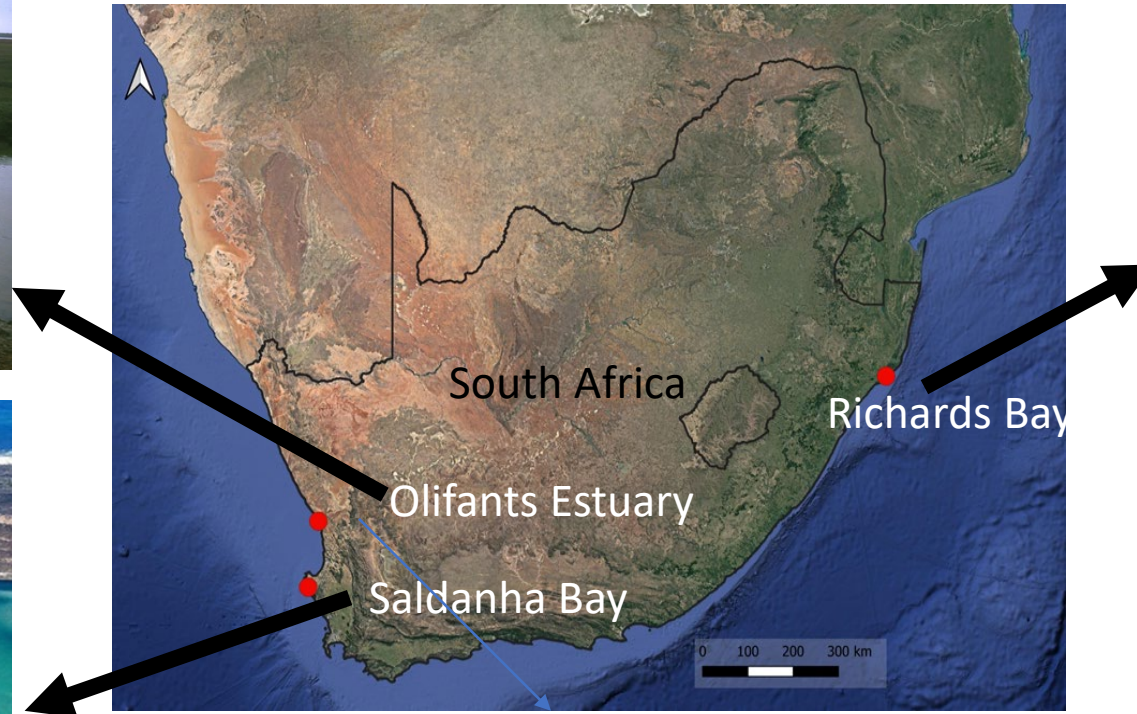


Overview of 3 Case Studies in South Africa



South Africa Team: Merle Sowman, Philile Mbatha and Johanna von Holdt
Environmental and Geographical Science Department, University of Cape Town
Partners in OCEANSPACT project

Case study 1

Langebaan – Saldanha
West coast



Context:

- Industrial Development Zone (IDZ): deep harbour, mining port, fishing, aquaculture, tourism
- Seaside town and IDZ (north) – RAMSAR site to south

Drivers of conflict:

- Increased industrialization
- Increased tonnage of mineral ore through the port - Dustfall already a concern
- Diverse views, interests and values
- Weak governance

Case Study 2

Olifants estuary
West Coast



Context

- 3rd most important estuary in SA
- Traditional fishing grounds for SSFs
- Land restitution case recently settled

Drivers of Conflict:

- Structural inequalities of the past
- Unequal power dynamics
- Mining impacts vs livelihoods and food
- Competing claims, interests and values

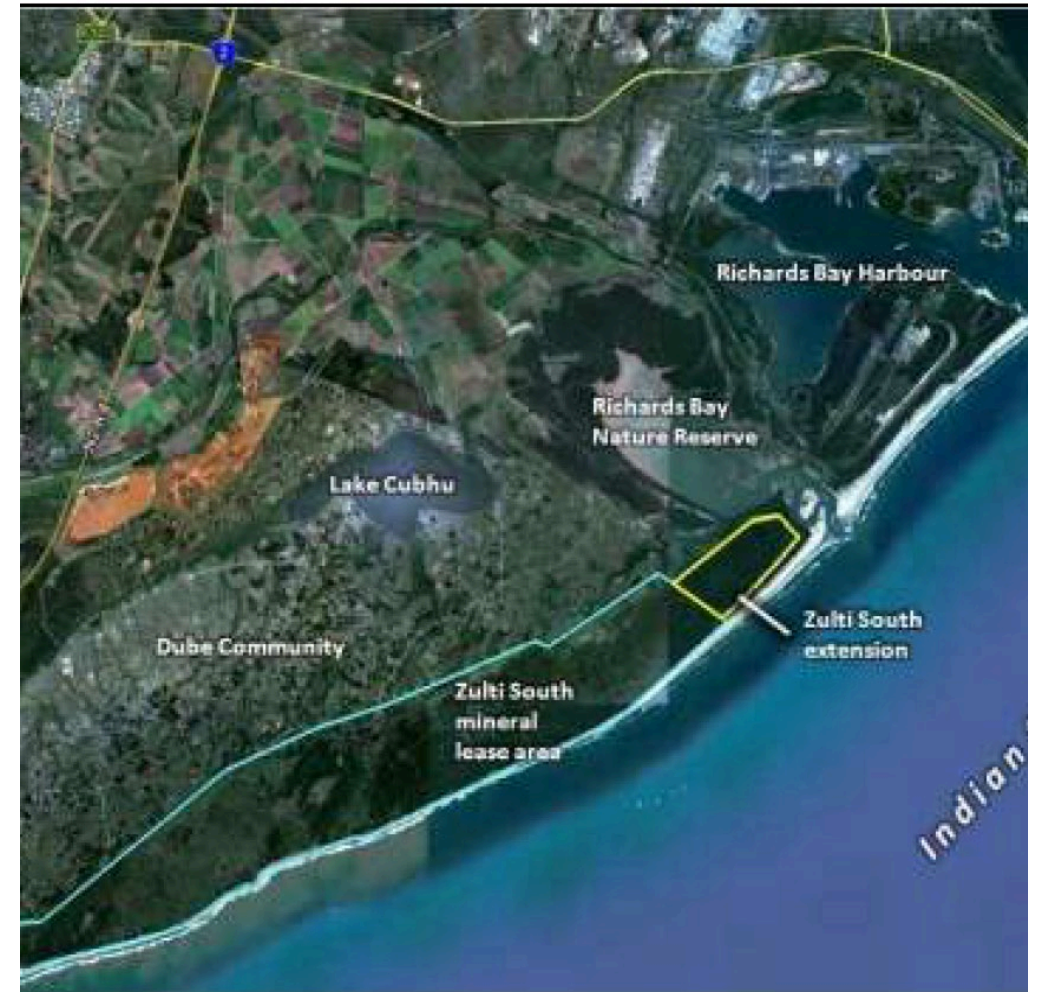
Case Study 3: RICHARDS BAY

Context

- Located on East Coast (Indian Ocean)
- Industrial and blue economy activities: coastal mining, off-shore oil and gas, sea cage farming, harbour expansion
- Dube community: main livelihoods involve small-scale fishing & agriculture

Drivers of conflict

- Actors with different interests and needs
- Coastal mining expansion
- Port expansion and sea cage farming
- Displacement of Dube community
- Loss of access to historic lands and fishing



Findings thus far:

- South Africa's aggressive "blue growth" strategy at odds with national policies and laws regarding environmental conservation and community rights
- Community voices not being heard – largely excluded from planning, EIA and decision processes – exacerbated by COVID -19
- Power asymmetries and government support for BE reduces likelihood of constructive dialogue and negotiations
- Communities working with social partners - information sharing, technical advice, assistance to access EIA processes, write letters, challenge decisions
- Alliances developing across different actors with similar interests /values
- Communities (+social partners) are challenging EIA and planning practitioners as well as government to follow required processes – holding them to account
- Communities increasingly exploring legal options to challenge decisions
- While dialogue and collaboration across all actors is being pursued – other strategies required to ensure rights and needs of communities respected